



MIDC: DELEGATE'S HANDBOOK

ABOUT MIDC:

WELCOME TO LAHORE GRAMMAR SCHOOL'S INAUGURAL EDITION OF THE MIAN IFTIKHARUDDIN DEBATING CHAMPIONSHIP. POWERED BY LGS JT'S TRAILBLAZING ENGLISH DEBATES SOCIETY AND WONDERFUL SPONSORS, MIDC SHALL LEAVE ITS MARK ON PAKISTAN'S DEBATING CIRCUIT FOREVER.

WE'RE GLAD YOU COULD BE A PART OF THIS HISTORIC MOMENT!



CONTACT US

364 E-1, JOHAR TOWN, LAHORE, PUNJAB, PAKISTAN

EVENT HEADS

HASSAAN AHMED: +92 302 8412125

ALI IMRAN: +92 304 9894550

EQUITY DIRECTORS

HAFI SHAHEER: +92 308 4530999

M. TAHA: +92 330 4082564

AYAN KHURRAM: +92 342 5318554

HANDBOOK PRODUCED BY THE PUBLICATIONS DEPT.

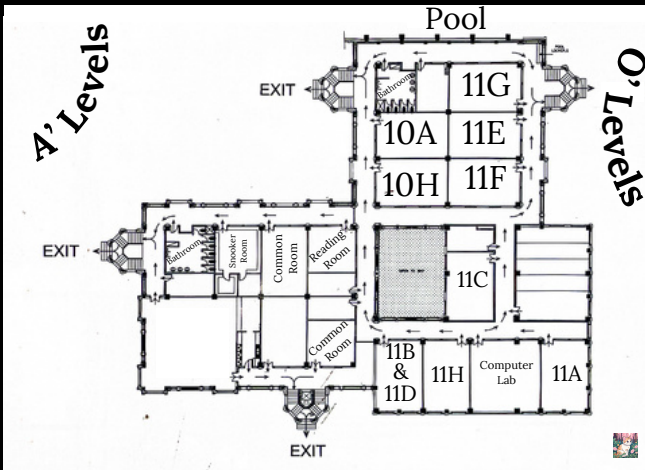
SCHOOL LAYOUT

THE SCHOOL BUILDING CAN BE DIVIDED INTO 3 MAIN AREAS

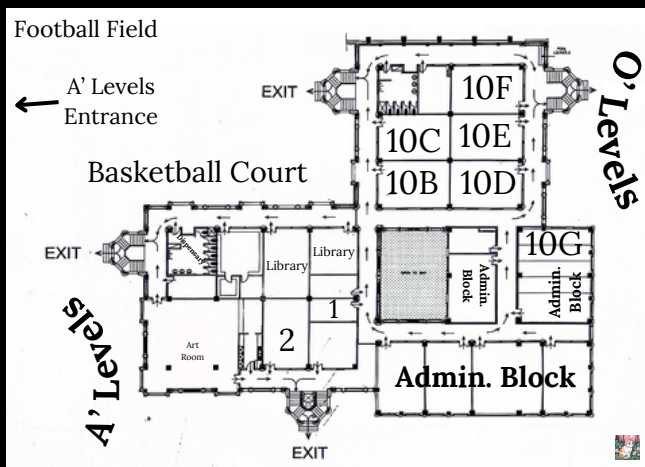
- THE AUDITORIUM
- THE A' LEVELS BUILDING
- THE O' LEVELS BUILDING

MOREOVER, THE EVENT WILL SPAN ALL ACROSS THE 4 STORIES OF THE SCHOOL. REST ASSURED, THERE WILL BE USHERS TO GUIDE YOU TO YOUR DEDICATED ROOMS, HOWEVER FLOOR LAYOUTS ARE GIVEN BELOW FOR YOUR CONVENIENCE.

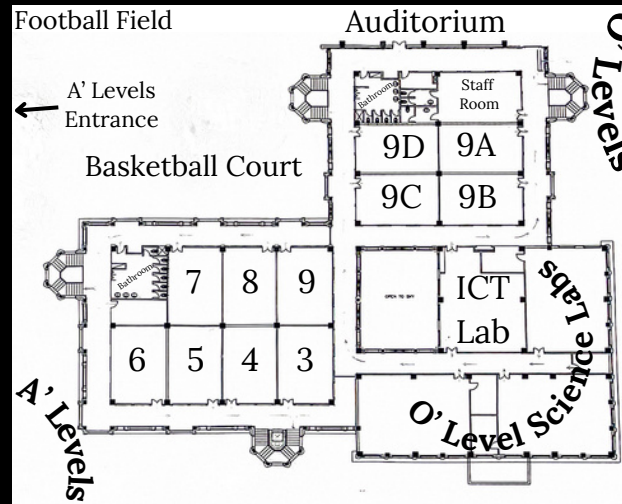
BASEMENT:



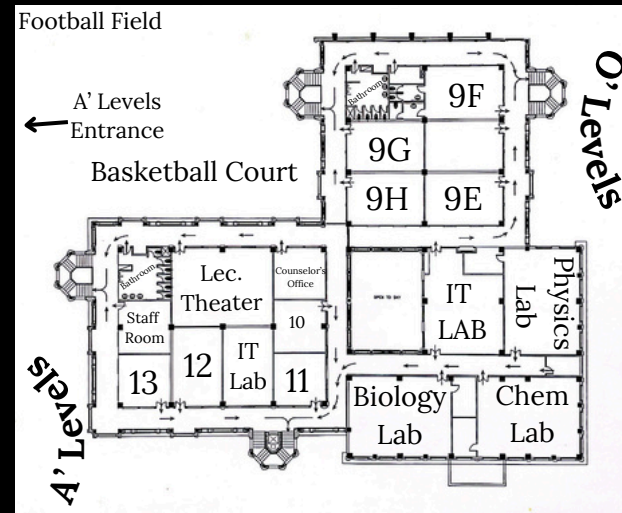
GROUND FLOOR:



FIRST FLOOR:



SECOND FLOOR:



A PRAYER AREA IS PRESENT IN THE BASEMENT OF THE AUDITORIUM ENTRANCE!

